



FOOTBALL
NSW

STRUCTURE DOCUMENT

2020

GIRLS

TALENT SUPPORT PROGRAM



CONTENTS

EXECUTIVE SUMMARY	3
2020 FNSW GIRLS TALENT SUPPORT PROGRAM STRUCTURE.....	4
2020 FNSW GTSP SCHEDULE AND OPERATIONS	6
2020 FNSW GTSP RESOURCING.....	8

EXECUTIVE SUMMARY

OVERVIEW

Football NSW have reviewed the player development and identification pathways and the competitions that support it.

This has been driven through our own assessment and guided by feedback provided from our clubs and associations (individually and through the Womens Standing Committee).

Coinciding with our review, the FFA, as part of their 'National Talented Player Pathway, has worked with and provided some funding to state federations across the country to implement bespoke Girls Talent Support Programs (GTSP) to provide additional training to our talented players.

As a result of this, Football NSW will introduce GTSP in 2020. Importantly, given that GTSP will be delivered locally – through the establishment of several hubs across Metropolitan NSW (North, South, East, West & Far South) and within key areas of Country NSW – it will reduce the need for players (and their parents) to travel long distances to participate in a centralised program.

This paper details the structure for the 2020 Football NSW GTSP.

Our overall aim is to provide our talented young players a best practice high performance training and playing environment that will hopefully see them progress through to the W-League and ultimately any of the various National Teams.

VISION

“FNSW will provide talented footballers a training environment, consistent with FFA policies, that delivers the highest standard of coaching and best platform for those players to realise their personal ambitions of becoming a professional footballer and representing their country.”

MISSION

“FNSW, in a collaborative approach with FFA, will develop and deliver the best talented player program nationally, aligned to FFA objectives.”

“The talented player pathways will be easily recognisable to clubs, parents, players and coaches, consistent with the National Curriculum and FFA and FNSW goals and objectives.”

Key Points:

1. Collaboration between FFA and FNSW, with FNSW delivering the daily management of the program
2. Funding model incorporating FFA, FNSW and participant contributions
3. FNSW TSP, and supporting programs, reflect the National Curriculum
 - Discovery Phase delivered by Football Associations
 - **Girls Skills Acquisition and Game Training Phase delivered by FNSW GTSP, WNPL & GCL Clubs and Associations**
 - Performance Phase delivered by Clubs (W-League, Women's National Premier League)
4. “Team” of FNSW GTSP coaches led by the FNSW Technical Director Women's and Girls

2020 FNSW GIRLS TALENT SUPPORT PROGRAM STRUCTURE

OVERVIEW

Talented player development is a fundamental responsibility of FFA and FNSW and is central to the technical outcomes outlined in the FNSW Strategic plan. Specifically, one of the five key performance indicators and strategic goals of the FNSW Strategic Plan is to:

“Deliver and promote a professional, integrated and clear development pathway, which lifts the overall technical standard of identified players and coaches throughout NSW and produces world class players”

The FNSW GTSP holds the following key principles at its core:

- ❖ provide a best practice development environment for talented youth footballers;
- ❖ key integration with the FFA’s National team program and coaches;
- ❖ deliver consistency in product and experience to all participants;
- ❖ align with the FFA’s National Curriculum; and
- ❖ provide age appropriate programs for elite female players.

Following is the basic structure for the 2020 program, detailing age groups, squad sizes and progression to State Teams.

LOCATIONS

FNSW GTSP will be conducted in four metropolitan hubs (North, South, East, West & Far South) and the five regional hubs (Southern, Orange, Griffith/Albury/Wagga Wagga) will continue in its current form.

AGE GROUPS AND PLAYERS

In 2020, potentially talented players in the Under 14 (born 2006), 15 (born 2005), 16 (born 2004) and 17 (born 2003) age group will be catered for in four hubs across metropolitan NSW and the current five hubs across regional NSW. Regional NSW TSP will be two combined (U12/U13 and U14/U15) squads. Up to 16 players will be selected in each squad/hub. Talented females will also be included in TSP boys in both Metropolitan and Country programs.

FFA IDENTIFICATION GAMES

In 2020, players will be invited to attend FFA games which form part of identification for the Junior, Young and Future Matilda programs. These games will enable FFA and NSW to establish a database of talented players for current and future state and national teams. It also provides further opportunity for the best to play against the best.

TEAM	PLAYERS
Combined age groups of U14 (born 2006) & 15 (born 2005) Metropolitan (North, South, East, West & Far South)	Up to 16 players
Combined age groups of U16 (born 2004) & 17 (born 2003) Metropolitan (North, South, East, West & Far South)	Up to 16 players
U12 and U13 Country (Southern, Orange, Griffith/Albury/Wagga Wagga) ❖ Format to remain the same as Boys TSP	Up to 18 players + any talented females
U14 and U15 Country (Southern, Orange, Griffith/Albury/Wagga Wagga) ❖ Format to remain the same as Boys TSP	Up to 18 players + any talented females

Key Points:

- Consistent with FFA Integrated Talented Player Pathway
- Provides consistent development programs leading into National Championships
- Provides consistent development program with one clear direction
- Prepares players for performance phase with clubs (WNPL / GCL / W-League)
- Pathway and opportunity for elite players

TRANSITION TO STATE TEAMS

FNSW State Teams

The FNSW GTSP will comprise of the most talented players in their respective age groups. Selection for FNSW State Teams will primarily be determined from FNSW Institute and the respective GTSP hubs. Selection of players will be made by a panel including the FNSW Technical Director Women's and Girls, FNSW Institute Coaches, FNSW Goalkeeper Coaches and GTSP Coaches.

Selection of any GTSP player to the respective FNSW State Teams is not guaranteed and relies on continued application and development.

Key Points:

- Identification opportunity through GTSP to ensure a comprehensive talent identification process is provided

Coaching

Appointment of coaches to the FNSW State Teams is detailed in the resourcing section of this document. Briefly, coaches appointed to the FNSW State Teams will come predominantly from the "team" of coaches delivering the FNSW Institute and GTSP.

FNSW will establish a separate identification and appointment program for coaches to the FNSW Country State Teams that has the development of regionally based coaches as a strategic priority.

2020 FNSW GTSP SCHEDULE AND OPERATIONS

SELECTION TO GTSP

This program will allow for elite players to train with and play friendly games against the best from across NSW. It will supplement and not interfere with the club training environment to achieve 3-4 sessions/week for the talented players identified for each program.

Invitation to the FNSW GTSP will be part of a club and WNPL & GCL identification process.

Players will be invited to attend respective GTSP if they have been identified from:

- previous FNSW Institute Teams;
- previous FNSW State Teams;
- previous FNSW State Titles;
- identified by FNSW assessors during the 2019 & 2020 Womens National Premier League and Girls Conference League competitions;
- recommended by their clubs as having the potential to be selected in the program; and
- recommended by opposition clubs as having the potential to be selected in the program.

No trials will be conducted for any GTSP.

Key Points:

- No trials for GTSP
- Selection to GTSP by invitation following identification

IDENTIFICATION SYSTEM

FNSW GTSP will run as per the school term (four terms per year). Every half year (Block 1 & 2), players within the program will be reviewed and may be released or invited to return for the next block. This would also mean that any talented player who is identified external to GTSP, would be invited into the program in the next half of the year.

COMPETITION AND TRAINING COMPONENT

The FNSW GTSP squads will participate in one training session per week in Block 1 and one session per fortnight in Block 2, which will be in addition to their club team training. Training and selection for GTSP squads will occur every half year at the end of Block 1 & 2.

INSURANCE AND REGISTRATION

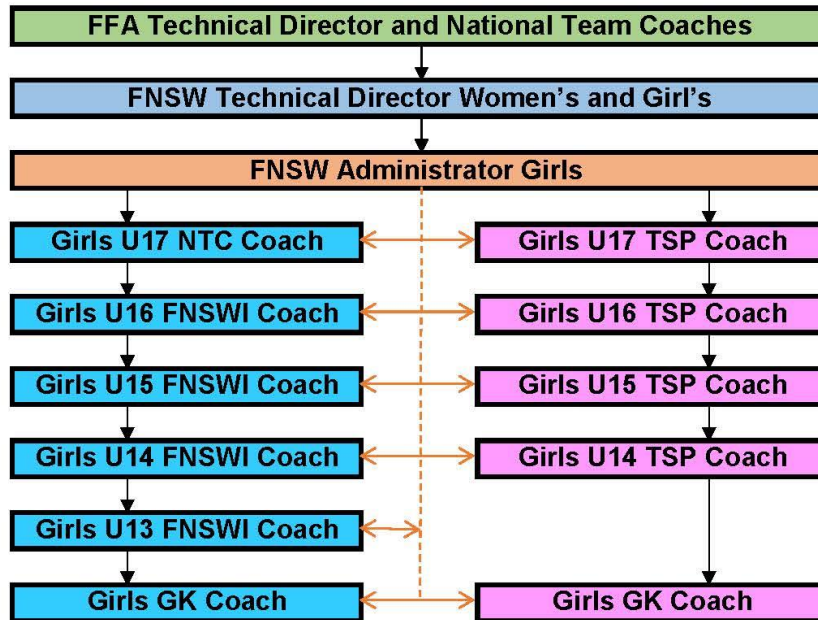
Players selected for FNSW TSP will be covered under FNSW Insurance. Please follow this link for injury cover details [Link to FNSW Player Insurance information](#).

Players will be required to register for TSP. This will not affect or impact club registration.

ORGANISATION CHART

Following is the organisation chart supporting the GTSP and FNSWI program.

Solid black lines in the chart identify reporting lines; dashed red lines identify functional relationships:



FFA TECHNICAL DIRECTOR AND NATIONAL TEAM COACHES

The FFA Technical Director sets the National Curriculum and provides football technical guidance to the FNSW Technical Director Womens and Girls.

It is anticipated that the FFA and FNSW Technical Directors will work closely in ensuring that the FNSWI provides an appropriate learning environment consistent with the National framework and desired outcomes.

FNSW TECHNICAL DIRECTOR WOMENS AND GIRLS

The FNSW Technical Director Womens and Girls will provide regular reports to the FFA Technical Director re: the progress of the GTSP and players within it.

The FNSW Technical Director Womens and Girls will oversee the employment and management of all GTSP Coaches.

TALENTED PLAYER PATHWAYS MANAGER WOMENS AND GIRLS

The FNSW Talented Player Pathways Manager Womens and Girls will provide regular reports to the FFA Technical Director re: the progress of the GTSP and players within it.

The FNSW Talented Player Pathways Manager Womens and Girls will oversee the employment and management of all GTSP Coaches.

FNSW State Team and NTC Challenge Coaches

Preferably, FNSW Metropolitan State and NTC Challenge Teams will be coached by the FNSWI/GTSP Coach that has led the respective age group team from which player's progress to State Team selection. This position ensures:

- a consistent training environment from GTSP and FNSWI to State Teams;
- appointment of best identified coaches to guide the best identified players; and
- maximised preparation time for FNSW players leading into the National Championships and NTC Challenge.

Each National Championships team will also be supported by one of the Goalkeeper coaches.

FNSW will implement a separate identification and mentoring program for potential FNSW Country State Teams coaches from the regional areas of FNSW jurisdiction

2020 FNSW GTSP RESOURCING

FNSW GTSP COACHES

FNSW GTSP Team and Goalkeeper Coaches

The FNSW GTSP coaches will be employed by FNSW in consultation with FFA. FNSW GTSP coaches will report directly to the FNSW Technical Director Womens and Girls and Talented Player Pathways Manager Womens and Girls and provide the best possible learning environment to the players in line with the FFA National Curriculum.

It is expected that the coaches will work together to develop players and provide a best practice learning environment, continually challenging the players and seeking improvement. Consistent and stable programs over a period of time are considered a vital platform in player development.

The Goalkeeper coaches will work with all selected coaches.

FNSW ADMINISTRATION

FNSW will manage the GTSP providing the administrative support required by the players and coaches, including but not limited to; invitation, identification, communications with parents, venue bookings and program schedules.

AUXILIARY STAFF

FNSW will appoint assistant coaches to support the GTSP head coaches, and a goalkeeper coaches will be appointed to each hub.

FNSW will also engage appropriately qualified medical officers (i.e. Certified Sports Trainers) to supply medical coverage at all FNSW GTSP matches.